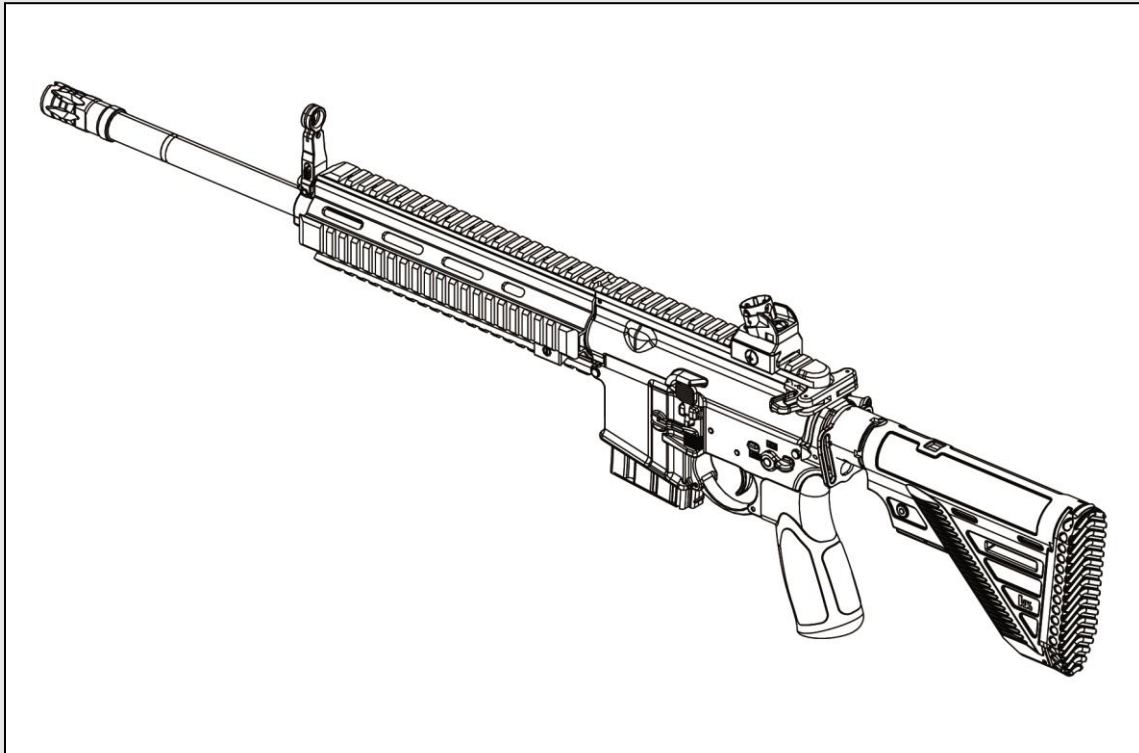


EN

Semi-Automatic Rifle Match Rifle MR223 A3

Calibre .223 Rem.



Spare parts catalogue



Semi-automatic rifle
Match Rifle MR223 A3
Calibre .223 Rem.



Table of contents

Using this spare parts catalogue	3
Purpose of this spare parts catalogue	3
Target audience for this spare parts catalogue	3
Information in the spare parts catalogue.....	3
Spare parts documentation.....	6
Assembly groups.....	6
Upper receiver, compl.	8
Charging handle, compl.	10
Handguard, compl.....	12
Bolt, compl.	14
Lower receiver, compl.....	16
Magazine 10 cartridges, compl.....	22

Using this spare parts catalogue

Purpose of this spare parts catalogue

This spare parts catalogue can be used to order individual components and assembly groups for the weapon.

Target audience for this spare parts catalogue

This spare parts catalogue is intended for trained firearms technicians and administrative personnel.

Information in the spare parts catalogue

This spare parts catalogue contains all of the information that is necessary to order individual components and assembly groups for the weapon. The contents of this spare parts catalogue have the following meanings:

Information	Meaning
Illustration of individual components	The illustration of individual components is an exploded view showing all parts of the weapon that can be ordered.
Item (Item Number)	The Item Number shows the number of the part in the exploded view. If there is a "--" instead of the Item Number, then the indicated item is not shown in the exploded view, but can be ordered nevertheless.
Designation	The designation contains the name of the part. If more than one of a part is present, then the number of parts is shown in brackets after the designation, e.g. (2x).
Ident.-No. (Identification Number)	The Ident.-No. is Heckler & Koch's internal number for identifying products and individual components.
Ident.-No. "black"	The Ident.-No. "black" is Heckler & Koch's internal number for identifying products and individual components in the colour "black".
Ident.-No. "RAL8000"	The Ident.-No. "RAL 8000" is Heckler & Koch's internal number for identifying products and individual components in the colour "RAL 8000 - green brown".

Information	Meaning
Quantity per 100 weapons – optional	This number indicates the recommended quantity to keep in stock per 100 weapons. The quantity includes both wearing parts and parts which may become lost. This information represents theoretical values based on experience, and may vary in practice.
Quantity per maintenance unit – optional	This number indicates the recommended quantity to keep in stock per maintenance unit. The quantity includes both wearing parts and parts which may become lost. This information represents theoretical values based on experience, and may vary in practice.
Comments	This column may contain additional information.



Parts and assembly groups can be ordered from Heckler & Koch by indicating the weapon, Designation and Ident.-No.

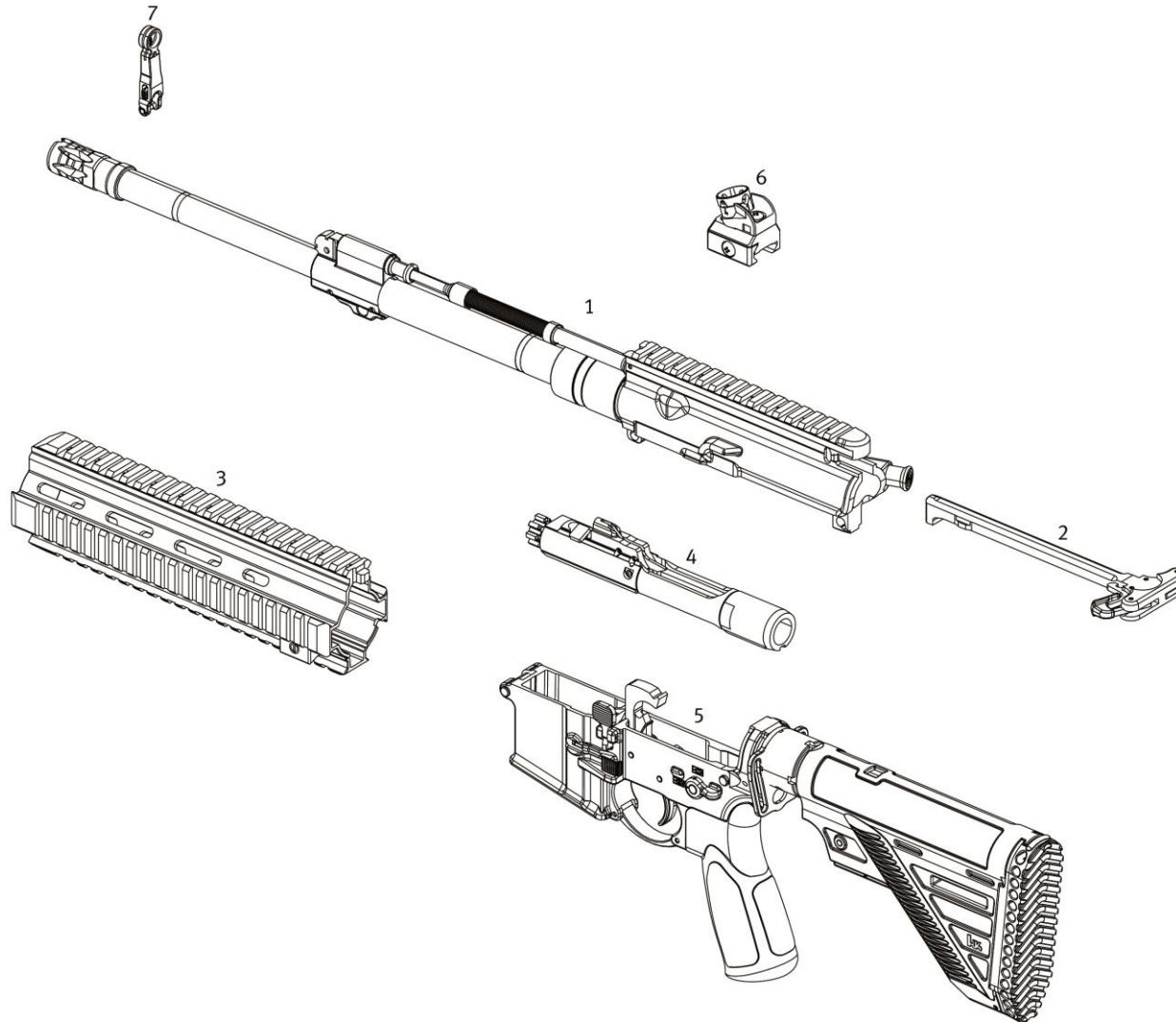
Semi-automatic rifle
MR223 A3


Calibre
.223 Rem.

Assembly groups



Spare parts catalogue
Heckler & Koch GmbH



Semi-automatic rifle MR223 A3		Assembly groups		 Spare parts catalogue Heckler & Koch GmbH	
Calibre .223 Rem.					
Item	Designation	Ident.-No. "black"	Ident.-No. "RAL8000"	Comments	
--	Semi-automatic rifle MR223 A3 .223 Rem. (Item 1 - 7)	237563	237564		
1	Upper receiver, compl.	237567	237609	Proof firing required.	
2	Charging handle, compl.	235028	237494		
3	Handguard, compl.	237599	237611		
4	Bolt, compl.	236268			
5	Lower receiver, compl.	237598	237610		
6	Rear sight, compl.	233197			
7	Front sight, compl.	236305			

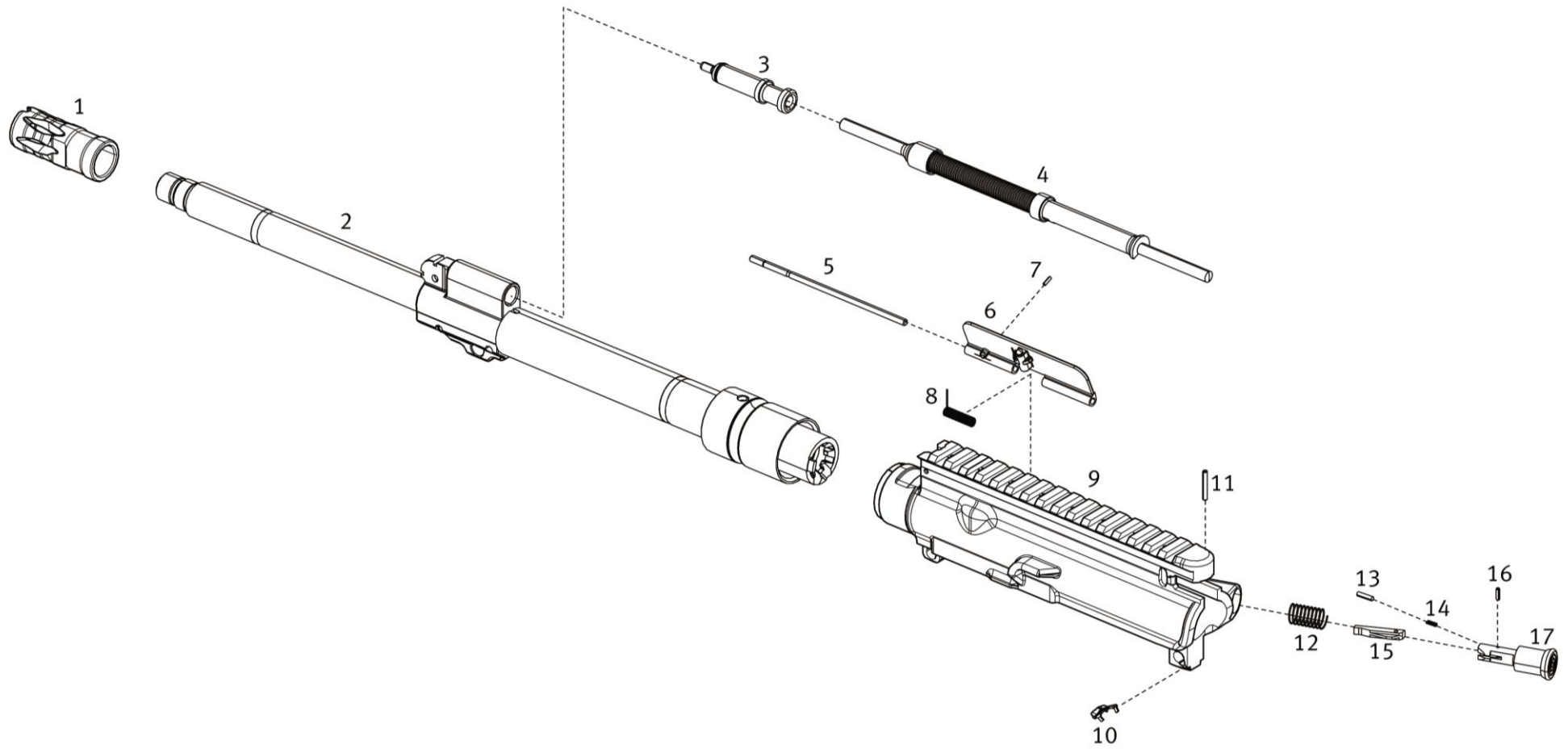
Semi-automatic rifle
MR223 A3

Calibre
.223 Rem.

Upper receiver, compl.



Spare parts catalogue
Heckler & Koch GmbH



Semi-automatic rifle MR223 A3 Calibre .223 Rem.	Upper receiver, compl.	 Spare parts catalogue Heckler & Koch GmbH
--	-------------------------------	---

Item	Designation	Ident.-No. "black"	Ident.-No. "RAL8000"	Comments
--	Upper receiver, compl. (Item 1 - 17)	237567	237609	
1	Flash hider	237016		
2	Barrel, compl.	237600		Proof firing required Item 2.
3	Gas piston, compl.	205381		
4	Rod, compl.	203648		
5	Axle for cover	203633		
6	Ejection port cover, compl.	203626	237300	
7	Clamping sleeve	979290		
8	Elbow spring	203632		
9	Upper receiver, assembled	237608	237612	Includes Item 10.
10	Leaf spring	237357		
11	Clamping sleeve for forward assist	979313		
12	Pressure spring for forward assist	203635		
--	Forward assist, compl. (Item 13 - 17)	203599		
13	Pressure bolt for forward assist	203637		
14	Pressure spring for pressure bolt	203636		
15	Locking piece for forward assist	203601		
16	Clamping sleeve for locking piece	979293		
17	Retainer, compl.	203600		

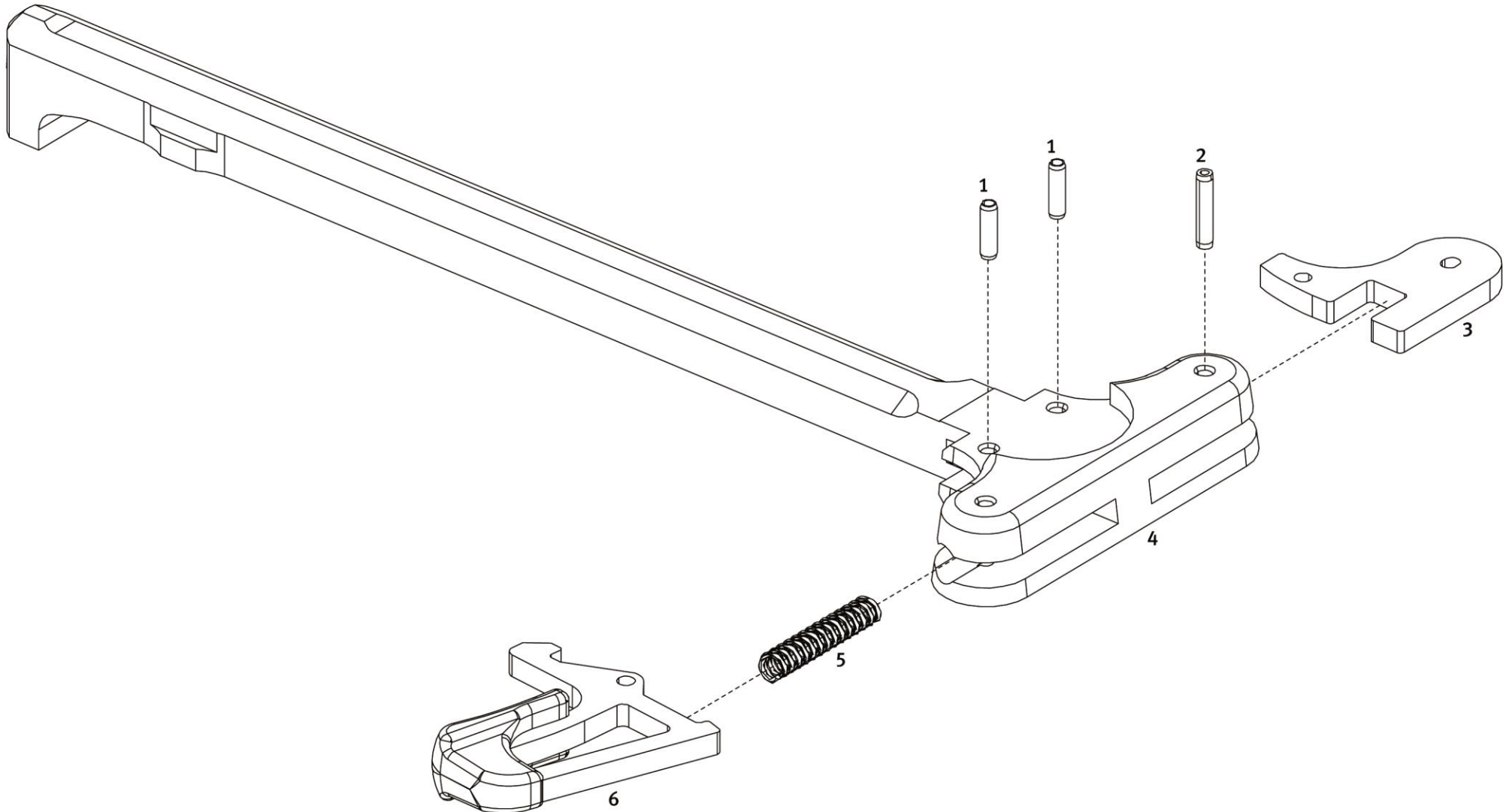
Semi-automatic rifle
MR223 A3


Calibre
.223 Rem.

Charging handle, compl.



Spare parts catalogue
Heckler & Koch GmbH



Semi-automatic rifle MR223 A3 Calibre .223 Rem.		Charging handle, compl.		 Spare parts catalogue Heckler & Koch GmbH
Item	Designation	Ident.-No. "black"	Ident.-No. "RAL8000"	Comments
--	Charging handle, compl. (Item 1 - 6)	235028	237494	
1	Clamping sleeve (2x)	236299		
2	Clamping sleeve for plate	928077		
3	Plate	227678		
4	Charging handle	235232	237500	
5	Pressure spring for pawl	203640		
6	Pawl, compl.	235377		

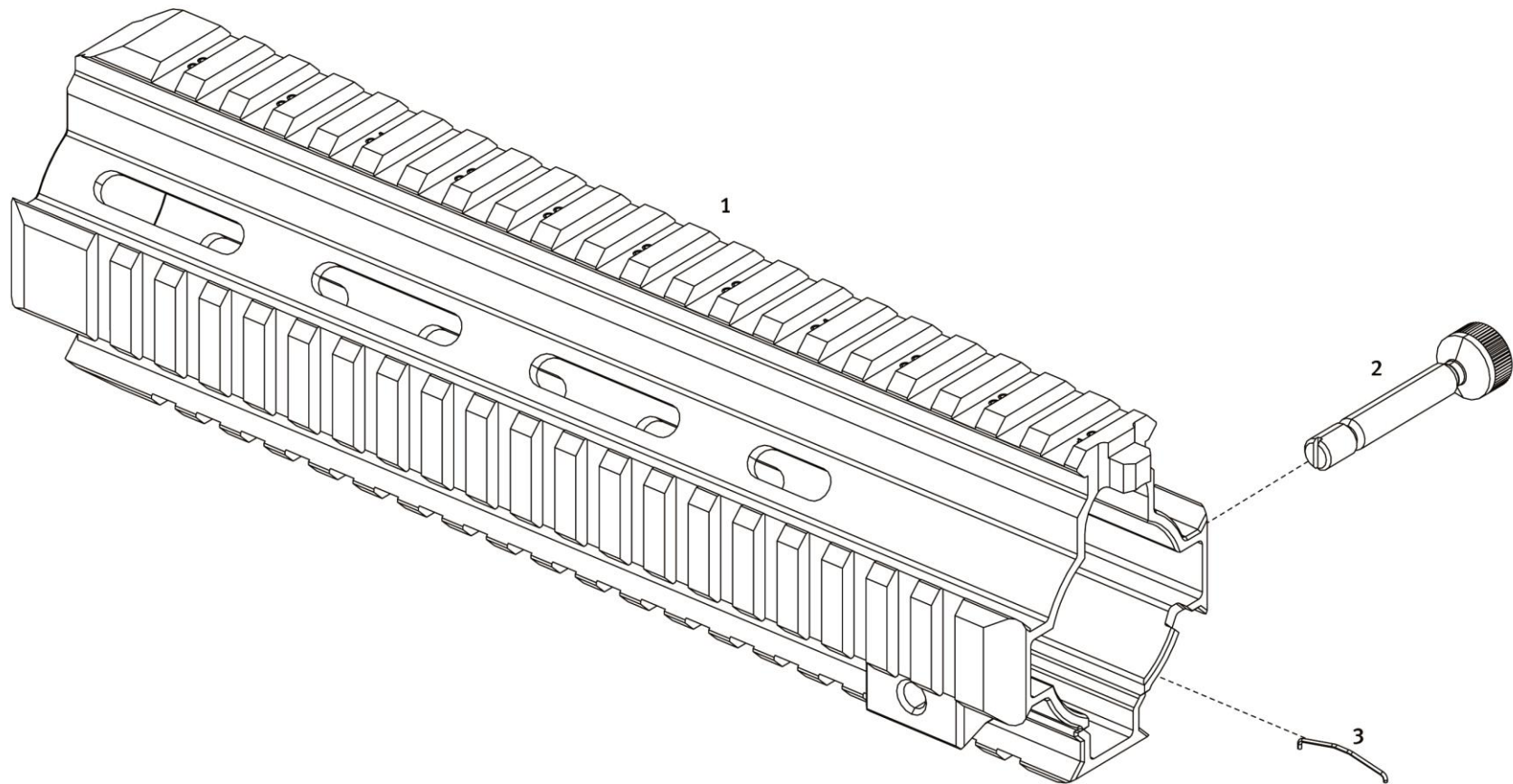
Semi-automatic rifle
MR223 A3


Calibre
.223 Rem.

Handguard, compl.



Spare parts catalogue
Heckler & Koch GmbH



Semi-automatic rifle MR223 A3 Calibre .223 Rem.		Handguard, compl.		 Spare parts catalogue Heckler & Koch GmbH
Item	Designation	Ident.-No. "black"	Ident.-No. "RAL8000"	Comments
--	Handguard, compl. (Item 1 - 3)	237599	237611	
1	Handguard	237602	237614	
2	Locking screw for handguard	236202		
3	Shaped spring	233186		

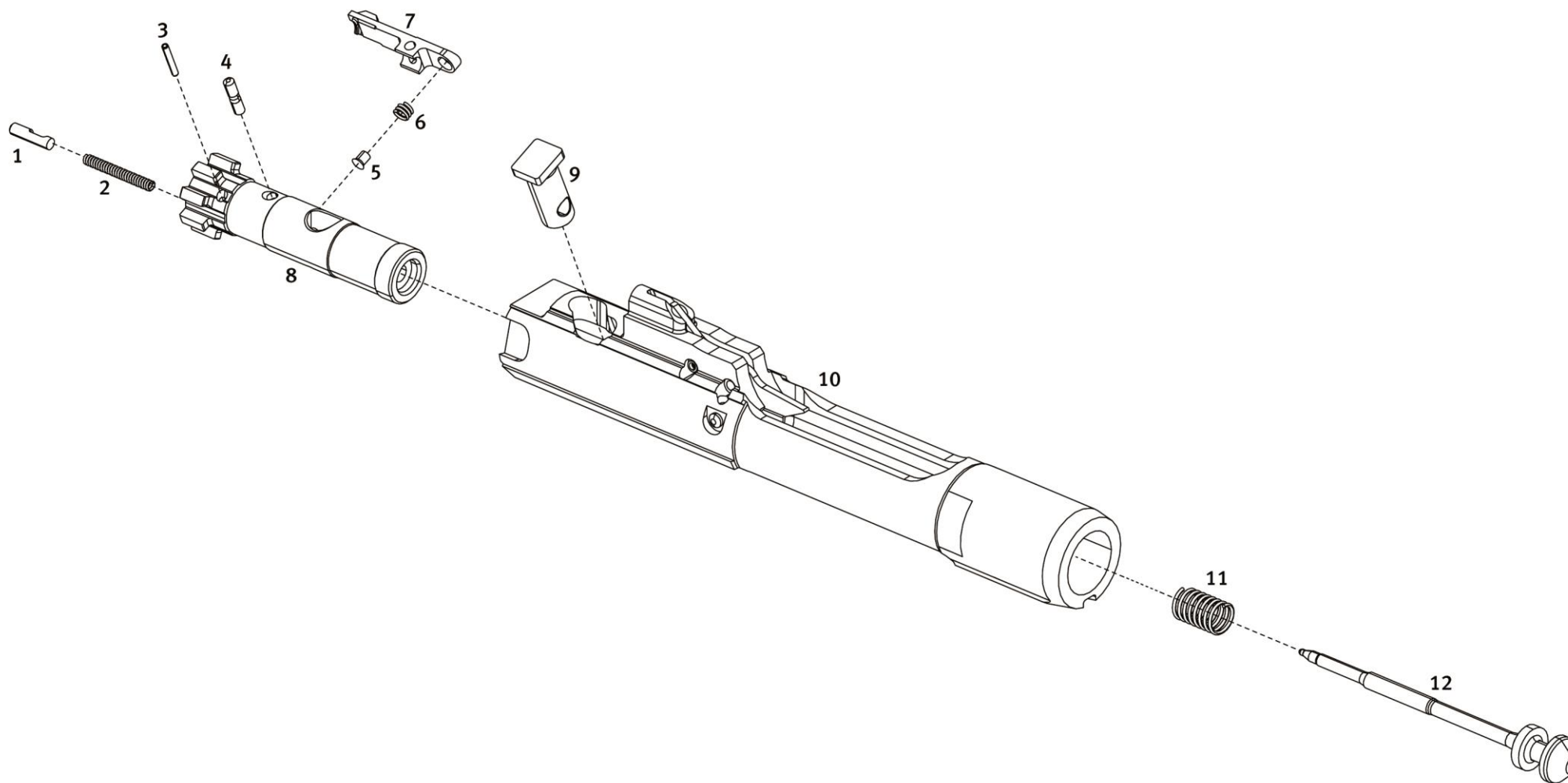
Semi-automatic rifle
MR223 A3


Calibre
.223 Rem.

Bolt, compl.



Spare parts catalogue
Heckler & Koch GmbH



Semi-automatic rifle MR223 A3		Bolt, compl.		 Spare parts catalogue Heckler & Koch GmbH
Calibre .223 Rem.				
Item	Designation	Ident.-No. "black"	Ident.-No. "RAL8000"	Comments
--	Bolt, compl. (Item 1 - 12)	236268		
--	Bolt head, compl. (Item 1 - 8)	235604		Proof firing required.
1	Ejector	233109		
2	Pressure spring for ejector	233110		
3	Clamping sleeve	236320		
4	Axle for extractor	203569		
5	Rubber plug	207779		
6	Pressure spring for extractor	205407		
7	Extractor	233108		
8	Bolt head	Proof firing required. Only as bolt head, compl. available.		
9	Control bolt	233112		
10	Bolt head carrier, assembled	236266		
11	Pressure spring for firing pin	233674		
12	Firing pin	233703		

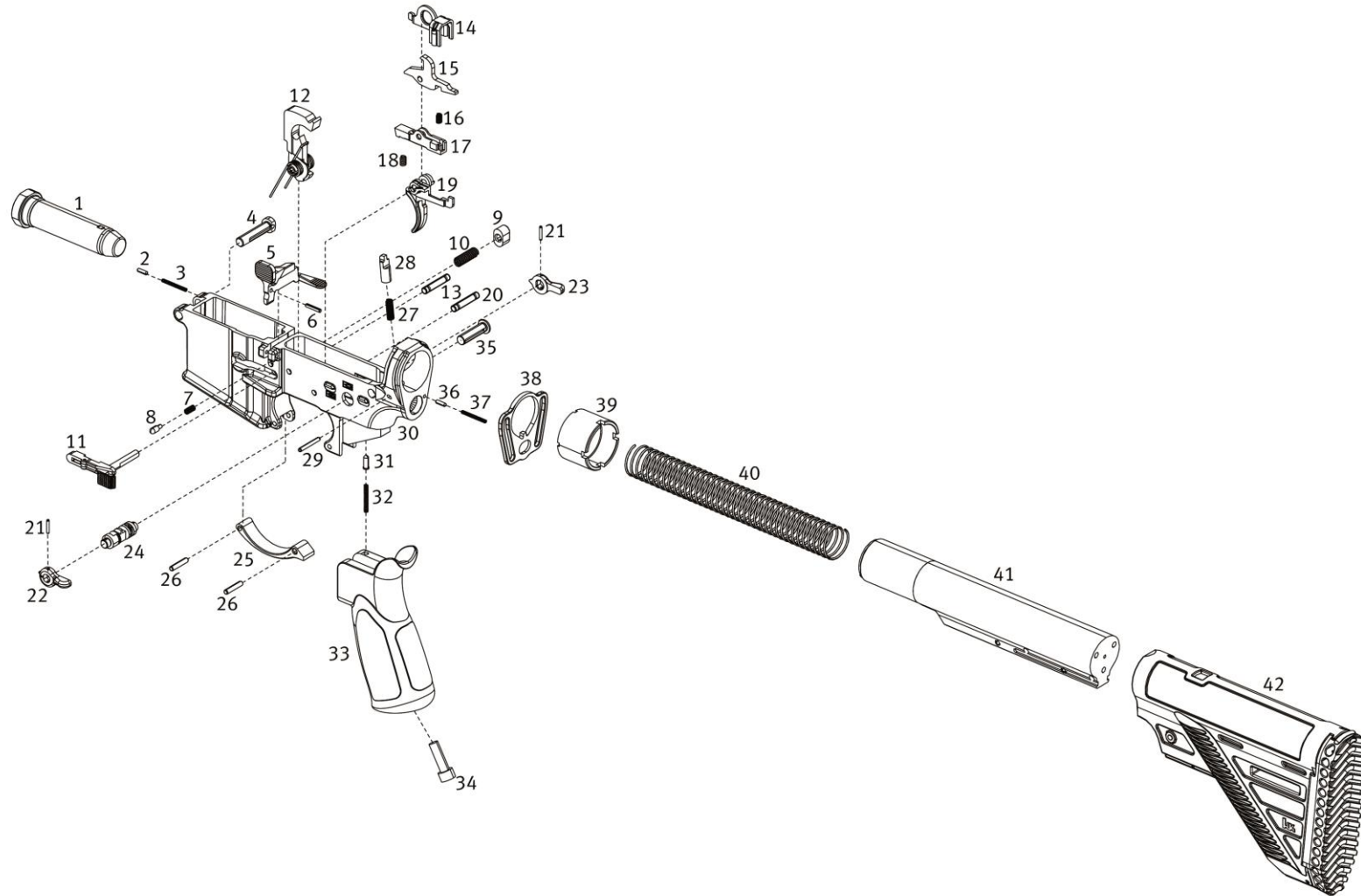
Semi-automatic rifle
MR223 A3

Calibre
.223 Rem.

Lower receiver, compl.



Spare parts catalogue
Heckler & Koch GmbH



Semi-automatic rifle MR223 A3 Calibre .223 Rem.	Lower receiver, compl.	 Spare parts catalogue Heckler & Koch GmbH
--	-------------------------------	---

Item	Designation	Ident.-No. "black"	Ident.-No. "RAL8000"	Comments
--	Lower receiver, compl. (Item 1 - 42)	237598	237610	
1	Puffer, compl.	203570		
--	Lower receiver, assembled (Item 2 - 34)	237601	237613	
2	Stop in for locking pin	233115		
3	Pressure spring for stop pin	233116		
4	Locking pin, front	233114		
5	Bolt catch/release	237090		
6	Clamping sleeve for bolt catch/release	979292		
7	Pressure spring for pressure pin	233132		
8	Pressure pin	233131		
9	Retainer for magazine catch	233127		
10	Pressure spring for retainer	233126		
11	Magazine catch, compl.	237323		
12	Hammer, compl.	235627		
13	Axle for hammer	227886		
14	Bridge	203593		
15	Disconnecter	227695		
16	Pressure spring	233149		
17	Sear release rocker	235731		

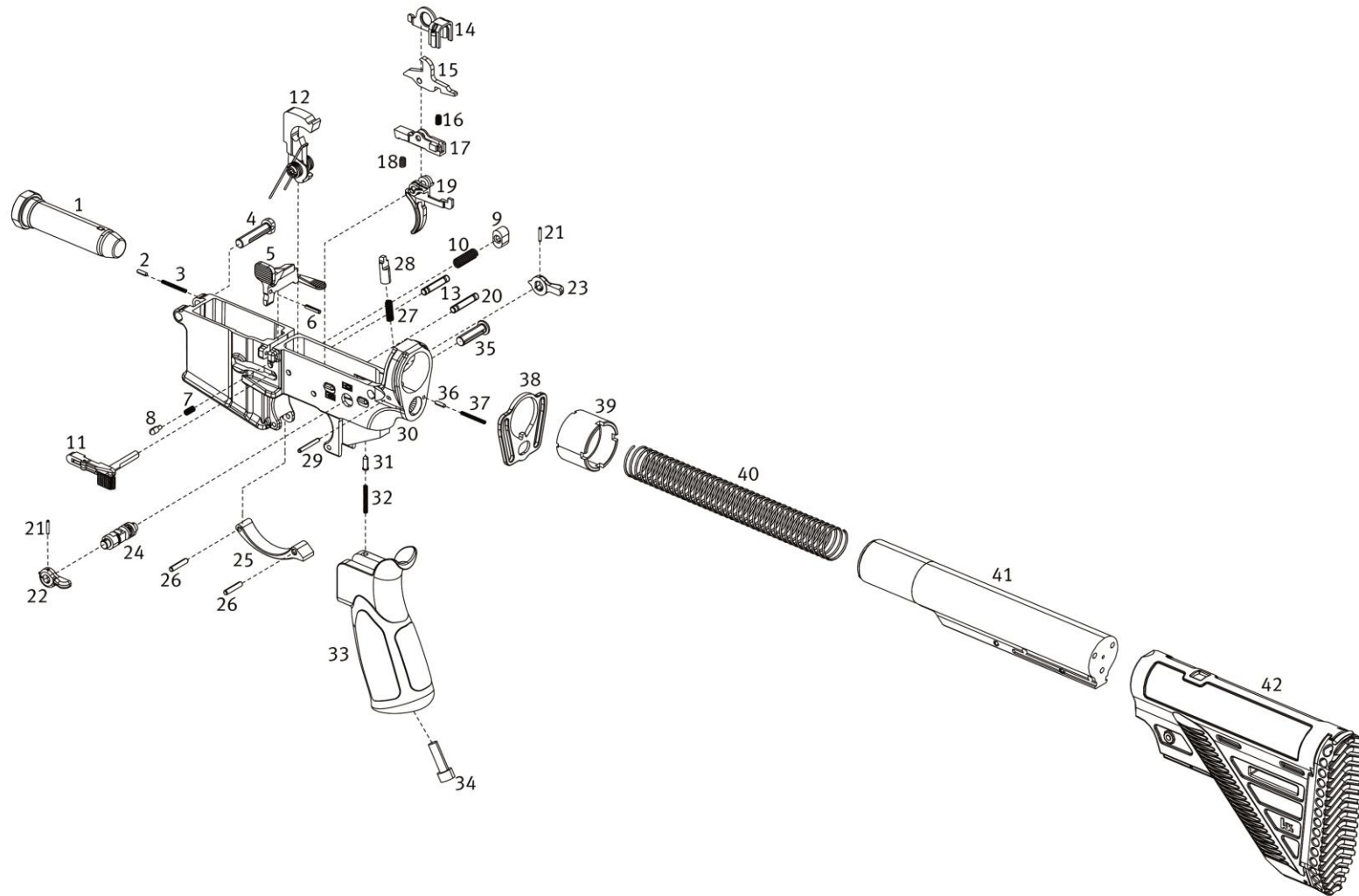
Semi-automatic rifle
MR223 A3

Calibre
.223 Rem.

Lower receiver, compl.



Spare parts catalogue
Heckler & Koch GmbH



Semi-automatic rifle MR223 A3 Calibre .223 Rem.	Lower receiver, compl.	 Spare parts catalogue Heckler & Koch GmbH
--	-------------------------------	---

Item	Designation	Ident.-No. "black"	Ident.-No. "RAL8000"	Comments
18	Pressure spring	235000		
19	Trigger	235732		
20	Axle for trigger	227886		
21	Clamping sleeve for safety lever (2x)	975415		
22	Safety lever, left	236211	236503	
23	Safety lever, right	236212	236502	
24	Safety roller	236274		
25	Trigger guard	237387	237354	
26	Clamping sleeve for trigger guard	979294		
27	Pressure spring for locking pin	233121		
28	Locking pin for buffer	233120		
29	Clamping sleeve for locking pin	986544		
30	Lower receiver	237604	237616	
31	Stop pin	236687		
32	Pressure spring for stop pin	233136		
33	Grip	227610	236501	
34	Screw	979522		
35	Locking pin, rear	233117		
36	Stop pin for locking pin	233115		

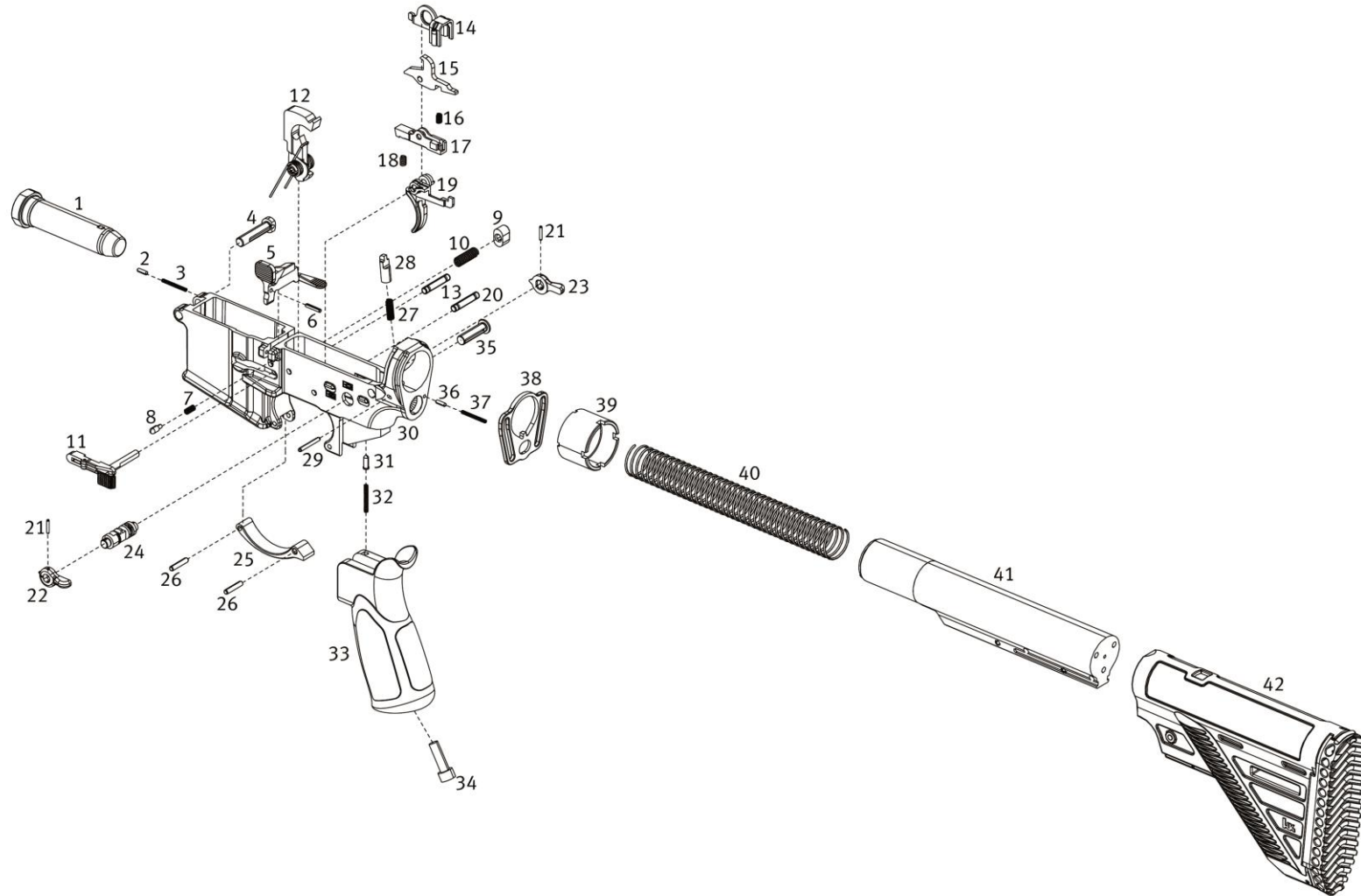
Semi-automatic rifle
MR223 A3

Calibre
.223 Rem.

Lower receiver, compl.



Spare parts catalogue
Heckler & Koch GmbH



Semi-automatic rifle
MR223 A3

Calibre
.223 Rem.

Lower receiver, compl.



Spare parts catalogue
Heckler & Koch GmbH

Item	Designation	Ident.-No. "black"	Ident.-No. "RAL8000"	Comments
37	Pressure spring for stop pin	233116		
38	Plate	235850		
39	Nut for extension	236733		
40	Recoil spring	233166		
41	Extension, compl.	236751	237361	
42	Buttstock, compl.	236720	237082	

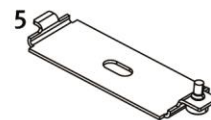
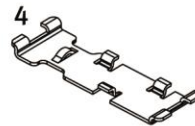
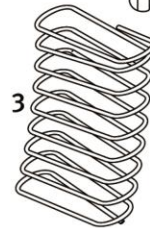
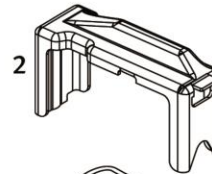
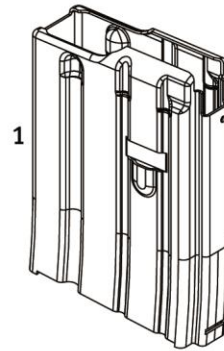
Semi-automatic rifle
MR223 A3

Calibre
.223 Rem.

Magazine 10 cartridges, compl.



Spare parts catalogue
Heckler & Koch GmbH



Semi-automatic rifle MR223 A3 Calibre .223 Rem.	Magazine 10 cartridges, compl.	 Spare parts catalogue Heckler & Koch GmbH
--	---------------------------------------	---

Item	Designation	Ident.-No. "black"	Ident.-No. "RAL8000"	Comments
--	Magazine 10 cartridges, compl. (Item 1 - 5)	235642		
1	Magazine housing	235643		
2	Follower	251771		
3	Magazine spring	235644		
4	Magazine locking plate	251773		
5	Magazine floor plate, compl.	251775		



No Compromise

Quality . Innovation . Service . Safety



Heckler & Koch GmbH
Heckler & Koch-Str. 1
78727 Oberndorf/N.
Germany

Telefon: +49 (0) 74 23 / 79-0
Telefax: +49 (0) 74 23 / 79-23 50
E-Mail: TD@heckler-koch-de.com
Internet: www.heckler-koch.com

Copyright © 2015
Made in Germany
Version 001.0315